

GSD[®]
Global Skin Dermatologist

Ultralite

Square Pulse IPL (SHR)





Brief Introduction

GSD Ultralite adopts square pulse and constant current charging technology, which emits constant energy to ensure optimum clinical results. Easy and customized interface makes it flexible for individual clinical procedure. Patented RVC (Real Value Calibration) technology ensures accurate energy to meet the user's demand.

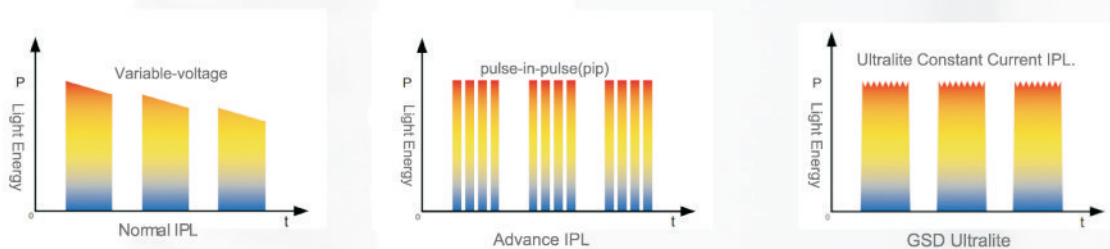
Working Principle

What is Square Pulse IPL?

Ultralite adopts square pulse technology to guarantee uniform energy output. Energy could instantaneously achieve peak power which could keep stable during the entire pulse duration. No matter it is acted with single pulse mode or multi-pulse mode, Ultralite always presents uniform and accurate energy which could reach presetting energy level without any sudden energy fluctuation.

What's the difference between conventional IPL and Ultralite?

Ultralite makes comfort as the first priority as well as delivering maximum treatment efficiency. Comparing with Ultralite, conventional IPL system is unfeasible to produce long-square pulse which should reach the relaxation period to target skin. Moreover, fluctuations of output energy will easily lead to ineffective treatment result and increase risk of side effect.





ADVANTAGES

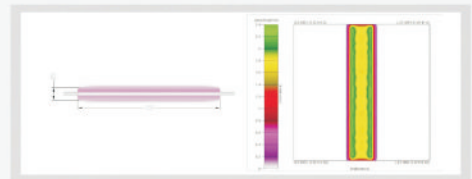
1. 12 hours non-stop flashing

Powerful cooling system and energy control unit enable the operator to provide uninterrupted treatment.



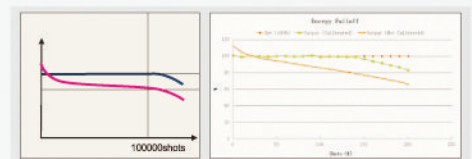
2. Durable & powerful Xenon lamp from UK

Ultralite adopts durable powerful Xenon tube from UK. Premium quality tube guarantees a lifespan of 100 000 shots (maximum can be up to 200 000 shots)



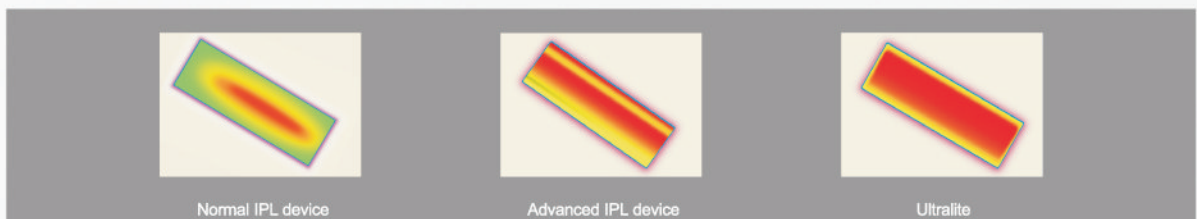
3. Patented RVC (Real Value Calibration) Technology

Real value calibration ensures accurate fluence to reach the presetting energy, and highly reduce ineffectiveness due to energy attenuation. RVC technology makes handpiece to deliver more constant and accurate energy to skin within 100 000 shots flashing.



4. Big spot size with even energy distribution

Imported excellent tube at a diameter of 9mm guarantees even energy distribution and accurate fluence on the spot size of 15x50mm, which improves comfort and efficiency.





5. Innovative TEC cooling system

The thermoelectric semiconductor cooling system increases the temperature difference between superficial and subcutaneous tissue, making the therapy more gentle. Adjustable TEC cooling with minimum -4°C protects epidermis while hair follicle is heating.



Ultraviolet fuctions on skin



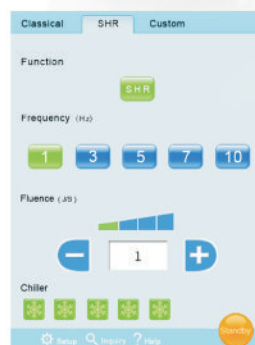
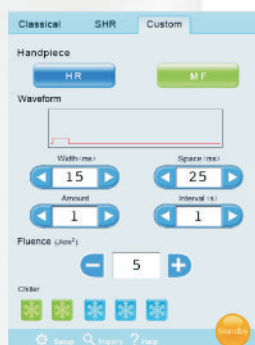
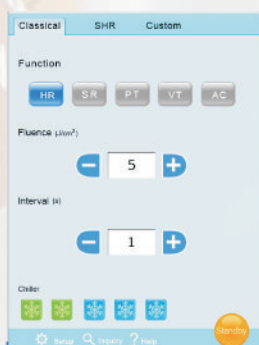
Melanin in follicle absorbs light, and light energy transforms to heat energy



Hair is removed

6. Intuitive and intelligent operation interface

Three operation modes are available. Classical mode provides intuitive operation interface to basic users, while custom mode is specially designed for professionals and SHR for fast hair removal treatment.



7. Modularized design for easy maintenance

Advanced modularized design structure is applied to Ultralite, which not only assures technical support to machine working, but also provides simple and convenient maintenance.

Technical Specification

Ultralite	
Continuous working hour	12 hours
Spot Size	15X50mm(HR/SHR), 10X50mm(MF)
Repetition rate	Up to 10Hz
Cooling	TEC contact cooling
Wavelength	600~1200nm (HR/SHR) 500~1200nm (MF)
Fluence	Up to 24J/cm ²
Pulse width	1~25ms, Max 4 pulses
Working mode	Classical mode, Custom mode, SHR mode
Dimension	466X455X1024mm

Applications





GSD[®]

Global Skin Dermatologist

Shenzhen GSD Tech Co.,Ltd. is a leading professional manufacturer of hi-tech aesthetic and medical equipment, combined with research, production, distribution and service with its own patents. It has been keeping pace with the international standard on technology, introducing innovative concepts continuously from RF to HIFU, from IPL to diode laser, erbium glass fractional laser, eximer light and pico laser. Under strict standards of FDA, Medical CE, ISO13485, ISO9001, GSD products have covered more than 120 countries and regions. Welcome to join us.

Headquarters
703, Building A, Futian TianAn Hi-Tech Venture Park, Shenzhen,
GuangDong, China

Tel: +86-755-82049682/82049307 Fax: +86-755-82049676
Email: info@gsd.com.cn Website: www.gsdaesthetic.com

Japan
4-14-4, Shinkoiwa, Katsushika-ku, Tokyo, Japan. Post code:124-0024
Tel: +81(03)-5879-4015 Fax: +81(03)-5879-4016



V2016.11